

# Windows

## Products Needed



Spic and Span®  
Disinfecting  
All-Purpose  
Spray & Glass  
Cleaner



Dawn®  
Professional  
Manual Pot  
and Pan  
Detergent

## Tools Needed

- Extension Pole
- MST Tool
- Towel(s), Paper
- Window Applicator/Squeegee
- Window Cleaning Bucket

## Frequency

Daily and Every 2 Weeks

## Special Directions

Wear appropriate gloves while cleaning, if sensitive to cleaning solutions.

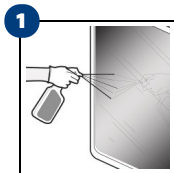
## Links to Training Video



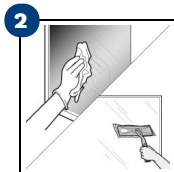
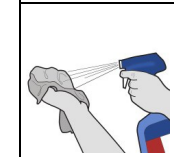
Scan the QR code or click the link below to see the training video.

<https://bit.ly/3xPGzPv>

## Daily Spot Cleaning



Spray the window or towel with Spic and Span Disinfecting All Purpose Spray and Glass Cleaner. **Use clean, dry towels.**



Wipe to remove soil and/or cleaner residues with towel and/or MST tool.

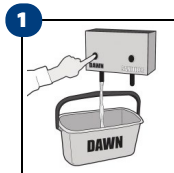
**NOTE:** Follow the window deep cleaning process using Dawn detergent and a squeegee if the glass for:

- very dirty surface
- large surface
- outdoor surfaces

## Best Practices for Streak Free Results:

- Do not overspray.
- Use clean lint free paper.
- Do not let glass cleaner dry.
- If using a microfiber, do not launder with fabric softener.
- If using microfiber, do not use a towel too wet or saturated with cleaner.

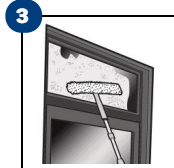
## Every 2 Week Deep Clean



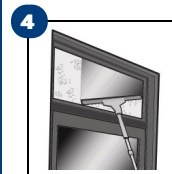
Fill with Dawn solution from the 3-compartment sink dilution center.



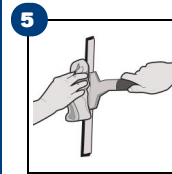
Dip applicator that is on the extension pole into the Dawn solution.



Apply Dawn solution to window to loosen the soils.



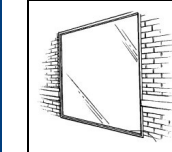
Squeegee straight down the window to remove soil and cleaner residues.



Wipe squeegee clean after each pull until the window is clean.



Wipe windowsills, door frames, and ledges dry.



**NOTE:** A damaged squeegee rubber blade is the #1 cause for glass streaks, smears and hazing when using this procedure. Be sure to inspect the condition of the rubber blade frequently and replace it when damage is causing streaks, smears, and hazing.

