

# Tytro Pro Select Plus Automatic Dilution System Usage Instructions

## Frequency

## Special Directions

### Link to Training Video



Scan QR Code or press the link to see food service training video.

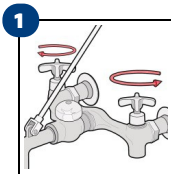
<https://youtu.be/bkDEbExpy3s>

### Replacing Concentrate Product Bottles

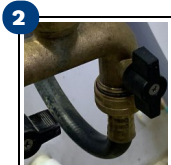
- 1 Remove mating cap from empty product bottle.
- 2 Replace with full product bottle in the basket.
- 3 Replace the mating cap onto matching product bottle.

**IMPORTANT:** The color of the mating cap is specific to the product and must match the color of the throat plug located inside the 1-gallon product bottle. Do NOT try to cross colors or you will damage the mating cap or the throat plug.

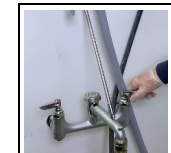
### Turn ON Water Supply



Turn **ON** hot water valve at the faucet for floor cleaner and warm to cool water for spray bottle filling.



Ensure on/off selector on the Y-Valve (or Y-Valve with Red Tip Model) is in the vertical position, if used. A strong stream of water dispensing from the red tip is needed while using the dilution system.



**NOTE:** Locations with a dedicated water connection will not use a Y-Valve and may only have cold water plumbed to the faucet.

### Spray Bottle Filling



Turn dial to select product.

**NOTE:** Make sure tube is inserted all the way to the bottom of the bottle to reduce foaming when filling. Do not mix cleaners.



Place shorter fill tube into correctly labeled spray bottle.



Fill spray bottle by pushing the spray bottle button near the top of dilution center.

### Mop Bucket Filling



Place floor cleaner long grey hose into mop bucket.

**NOTE:** Do not mix cleaner.



# Tytro Pro Select Plus Automatic Dilution System Usage Instructions

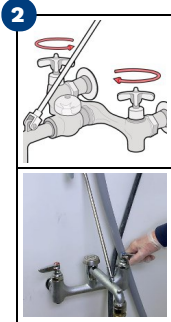
2 of 2



2 Push far-right mop bucket button to dispense floor cleaner into the mop bucket. No need to turn dial to select product, just push the mop bucket button.

## Turn OFF Water Supply

1 Ensure on/off selector on the Y-Valve (or Y-Valve with Red Tip Model) is in the Horizontal position, if not used. The stream of water will stop dispensing from the red tip.



2 Turn **OFF** all water valves at the faucet when NOT in use to avoid damaging the faucet.