

Test Chlorine Sanitizer Solution

Tools Needed

- Chlorine Test Strips
- Paper Towel
- Small Cup or Pan

Frequency

As Needed

Special Directions

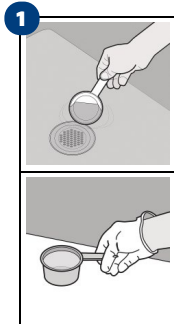
Wear appropriate gloves, if sensitive to cleaning solutions.

Link to Training Video

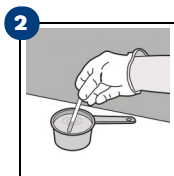


Scan the QR code or click the link to see the training video.

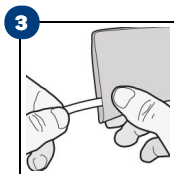
<https://youtu.be/NQDRbMficyA>



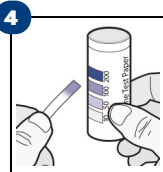
1 Scoop a small test sample of sanitizer solution from a sink or bucket and set on a counter.



2 Immerse the test strip into the sanitizer solution for 1 SECOND.



3 Immediately blot the chlorine test strip with a paper towel to stop the chemical reaction that develops color.



4 Determine the concentration by matching the color of the test strip to the closest color on the concentration/color chart located on the label of the test kit.

EPA approved food contact surface sanitizing usage concentrations for P&G Professional products are:

- Clean Quick Chlorine Sanitizer: 100 ppm AvCl
- Clean Quick Chlorinated Sanitizer and Cleaner: 100 ppm AvCl
- Luster Chlorine Sanitizer: 50 to 100 ppm AvCl.