

Install and Operate the Dilute 2 Go Hose Kit

Frequency

As Needed

Special Directions

Wear appropriate gloves while cleaning, if sensitive to cleaning solutions.

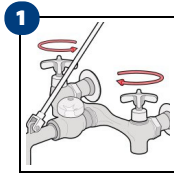
Link to Training Video



Scan the QR code or click the link below to see training video.

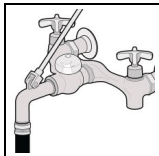
<https://bit.ly/3RJeB1x>

Installing the Hose Kit



1 Ensure the cold and hot water valves are turned **OFF**.

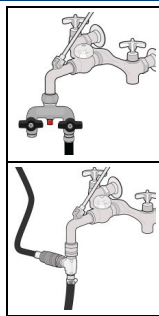
4 Common Plumbing Fixture Configuration



Configuration 1: Install water hose to the faucet. Atmospheric vacuum breaker are often built into the faucet.

Bleeder Valve Guidelines:

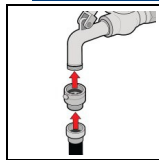
Bleeder valves should be installed onto the faucet before the water supply hose to prevent water pressure on the atmospheric vacuum breaker. Comply where required.



Configuration 2 & 3: Install water supply hose to the bleeder valve if required. Y-valve style with (2) valves or a "side kick" style with quick connections can be used depending on local preferences.

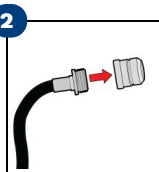
Bib Vacuum Breaker Guidelines:

Alternatively, a vacuum breaker maybe required. Install on the faucet before dilution equipment. Bib vacuum breakers are additional back flow prevention. Comply where required.

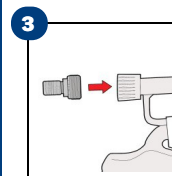


Configuration 4: Install water supply hose to bib vacuum breaker on the faucet spout if required.

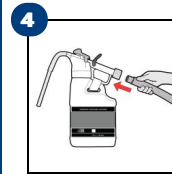
Installing Quick Connection Hose Kit



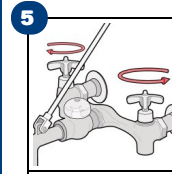
2 Install female quick connection to the water hose.



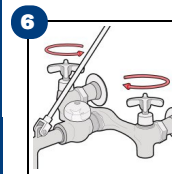
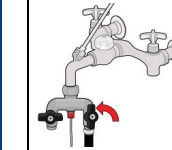
3 Install male quick connection to the Dilute 2 Go dispenser bottle.



4 Connect the quick connections from the Dilute 2 Go product bottle to water hose.

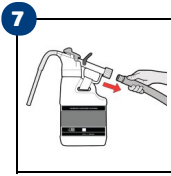


5 Turn water **ON**. Turn Y-bleeder valve to **OPEN** position if bleeder is required. When the hose and unit pressurize it is ready for use.



6 Turn water valves **OFF** when not in use. Ensure the faucet atmospheric vacuum breaker is not under constant water pressure.

Install and Operate the Dilute 2 Go Hose Kit



Slide the yellow control bar to the LOCK position. Disconnect the quick connections. Store bottle upright.