

How to use a Hand Pump Up Sprayer

Tools Needed

- Hand Pump Up Sprayer

Frequency

As Needed

Special Directions

If sensitive to cleaning solutions, working with cleaners overhead OR required by the product label, be sure to wear appropriate gloves or eye protection. (CCT 602)

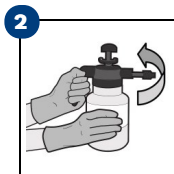
Link to Training Video



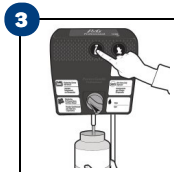
Scan the QR code or click the link to see training video.

Link

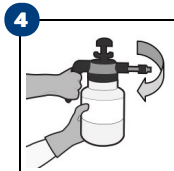
- 1 Vent the sprayer by rotating the side blue dial.



Twist **OFF** the hand pump from the canister.



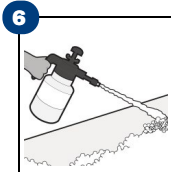
Fill the pump sprayer canister with cleaning solution at dilution center.



Twist the hand pump onto the canister.



Pump sprayer 15–20 times or depending on how much cleaning solution is in the canister.



Hold down the blue button to apply the cleaning solution. Rotate the spray nozzle to the left for spray or right for a narrow stream.