

# Hand Pump Installation at the 3-Compartment Sink

## Frequency

## Special Directions

Disposable gloves and safety goggles must be worn when handling concentrated chemicals. (CCT 102)

### Link to Training Video



Scan QR code or click the link below to see the training video.

Link

### Install Hand Pumps at the 3-Compartment Sink

- 1 Attach the bottom pump straw onto the hand pump assembly.
- 2 Insert the hand pump into the 1 gallon open loop product bottle. Secure the pump by twisting the cap clockwise onto the product container.
- 3 Push the hand pump until product pulls through the straw and dispenses a full dose into the sink basin.

### Sink Basin Set Up

- 4 Determine the "Gallon Capacity" of the sink basin.

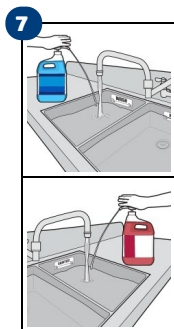
### Product Dosing Guidelines Based on Sink Size:

- 5 Gallon Sink = 1 Pump (or 1 ounce)
- 10 Gallon Sink = 2 Pumps (or 2 ounces)
- 15 Gallon Sink = 3 Pumps (or 3 ounces)
- etc.

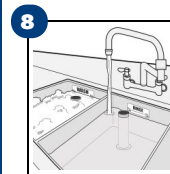
- 5 Use cleaner and paper towel to clean interior of sink basin. Apply the "Fill-Line" sticker above the 3/4 full mark.

### Prepare Solution for Use

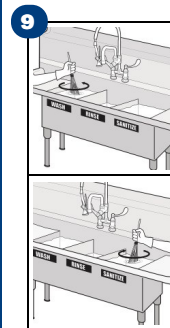
- 6 Ensure the correct amount of pumps match the Push the Pump sticker and what is recorded on the wall chart. Apply the 800# and product labels near the pump.



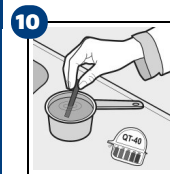
Pump the amount of product into the sinks as stated on the Push the Pump stickers.



8 Fill the sink basin with fresh water to "Fill-Line" level.



9 Mix the solution in each basin with mixing tool. Ensure the tool is rinsed with water before mixing the quaternary sanitizer solution.



10 Test the sanitizer solution by following the **Test Quaternary Sanitizer Solution** procedure.



Scan the QR code or press the link to see the training video.

<https://bit.ly/3aOMMkz>