

# Install Touchless Safeguard Gel Hand Sanitizer Dispenser

## Products Needed



Safeguard®  
Foaming and  
Sanitizer  
Touchless  
Dispenser

## Tools Needed

- Anchors
- Drill, Cordless [For Wall Mounted Install]
- Screwdriver, Flat Head Small
- Screwdriver, Phillips Small
- Screws

## Frequency

### Special Directions

Automatic or touchless dispensers ship ready to use for either foaming hand soap or gel hand sanitizer.

## Link to Training Video



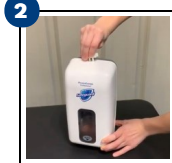
Scan QR code to see the video referencing the gel hand sanitizer conversion, installing the stand, drip tray and selecting the dose.

<https://bit.ly/3JQ5nMh>

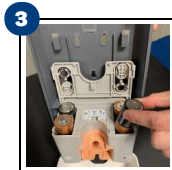
## Dispenser Installation



1 Locate the clear bag that contains various parts and set aside. Remove the white plastic key.

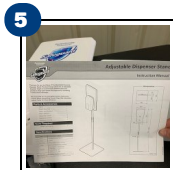


2 Open the dispenser cover from the top using the white plastic key by pushing down through the key holes.



3 Install the batteries.

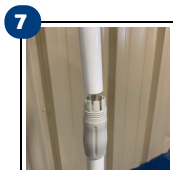
## Dispenser Stand, If Available



5 Locate the manufacturer instructions for setting up the stand. Refer to the instructions before installing the dispenser to the stand.



6 Install the stand tube onto the platform and secure with the (2) assembly screws provided in the stand kit.



7 Slide the panel into the stand tube and lock the panel to the desired height. The stand height can be adjusted at any time.

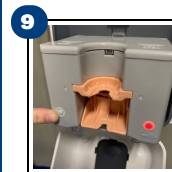
## Install Drip Tray



8 Install the drip tray to the back of the dispenser before installing the dispenser to the stand or wall. If installing to the stand use the (3) dispenser screws provided in the stand kit.

**NOTE:** The dispenser drip tray will help the guest intuitively place their hand in the correct location for the sensor to accurately dispense the hand sanitizer.

## Select the Dose



9 Locate the dispenser **MODE** switch on the left side of the battery operating compartment. This button controls the **ON/OFF** function and the number of doses.

# Install Touchless Safeguard Gel Hand Sanitizer Dispenser



Locate and verify the LED **GREEN/RED** light on the right side of the battery operating compartment is lit.

### Dosing Guidelines:

- Green LED Lit Light = 1 dose
- Red LED Lit Light = 2 doses



Push this **MODE** switch button to ensure the LED light on the right is **GREEN**.



Remove the cap at the end of the Safeguard Gel Hand Sanitizer cartridge.



Install a hand sanitizer cartridge into the dispenser. Confirm the white pump attachment at the bottom of the cartridge is seated properly and the two ends click into place.



Close the dispenser cover.



Place your hand under the dispenser to test the automatic pump. Repeat several times until you see one dose dispensed into your hand.

## Installing to a Wall

### American Disabilities Act (ADA) Requirements:

To meet ADA requirements, install all hand soap/sanitizer dispensers so that the top of the push bar is at a 40-inches from the floor.



Install the touchless dispenser using anchors, screws and drill. Install with at least 12 inches under the dispenser to allow the sensor to properly operate.

**NOTE:** If the touchless dispenser is installed with the a drip tray the sensor will likely perform properly. The sensor may need to be adjusted if picks up an obstruction like a counter top or sink etc.

### Sensor Adjustment:

- Turn counter-clockwise (3 o'clock) for less sensor.
- Turn clockwise (9 o'clock) for more sensor



Verify the LED light is not flashing as this indicates the incorrect installation and the dispenser is not operating correctly.

## Sensor Adjustments



Locate the adjustment screw behind the keyhole shaped protective cover on the right side of the battery compartment under the LED light.



Locate the adjustment screw. This screw is sensitive. Turn the screw gently with a thin screw driver.



**CAUTION** the rotation has a limit of 180 degrees. DO NOT force the rotation past the limit.