

### Tools Needed

- Evoclean Key
- Needle Nose Pliers
- Nitrile Gloves
- Philips Screw Driver
- Safety Glasses

### Frequency

Every 6 Months

### Special Directions

Ensure laundry operations have stopped and washers are empty prior to taking apart the unit. Ensure necessary replacement parts from car stock.

### Link to Training Video

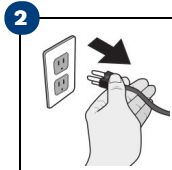


Scan the QR code or press the link to see the training video.

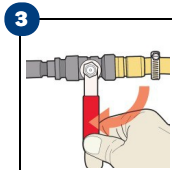
<https://bit.ly/2XaBcwB>



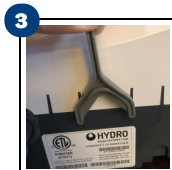
**1** Put on safety glasses and nitrile gloves.



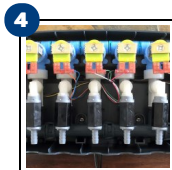
**2** **UNPLUG** Evoclean unit from its power source.



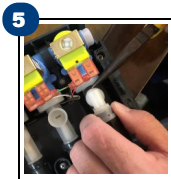
**3** **SHUT OFF** water supply valve.



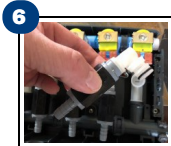
**3** Use Evoclean Cabinet Key to **OPEN** cover.



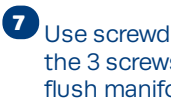
**4** **INSPECT** Evoclean eductors and manifold for leaks or signs of wear.



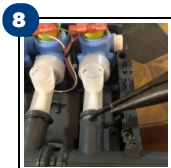
**5** Use Pliers to **REMOVE** all retaining clips from eductor.



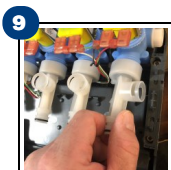
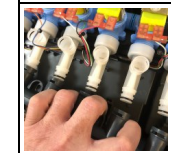
**6** **PULL** each check valve. **INSPECT** for any damage.



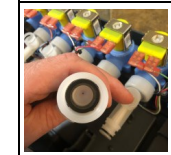
**7** Use screwdriver to **UNSCREW** the 3 screws that secure the flush manifold to the cabinet.



**8** Use Pliers to **REMOVE** all clips from flush manifold. **SLIDE** flush manifold from eductors and set aside.



**9** **UNSCREW** eductor. **INSPECT** for wear or damage.



**IMPORTANT:** Inspect components for chemical build up. Clean or replace as needed.

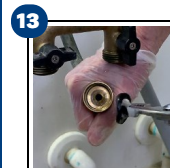
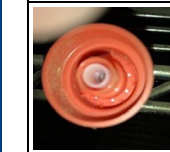


**10** **INSPECT** O-Rings for wear. **REPLACE** as needed.

**11** **REASSEMBLE** components.



**12** **INSPECT** mating caps, throat plugs and supply tubing. **REPLACE** as needed.



**13** **DISCONNECT** water supply hose. **REPLACE** inline water strainer. (if used)



