

# CCT 013 Replacing Open Loop Foot Valve

## Tools Needed

- Container or Utility Bucket
- Gloves, Disposable
- Goggles, Safety
- Replacement Foot Valve (Spare Parts Kit)
- Tubing Cutter

## Frequency

Damaged/ Missing Parts or Observed Product is Under Dispensing or Prime is Not Holding

## Special Directions

Disposable gloves and safety goggles must be worn when handling concentrated chemicals

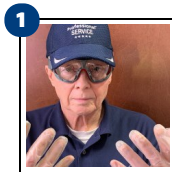
## Link to Training Video



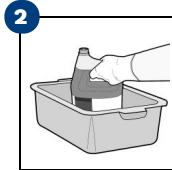
Scan QR Code or press link to see the training video.

<https://bit.ly/3bjgvmq>

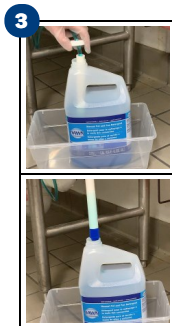
## Replace Foot Valves



Put on gloves and goggles.



Locate the product bottle. Place it inside a large container. Note the supply tubing inside the bottle.



Twist **OFF** the white cap with hole and pull the supply tubing out of the bottle.



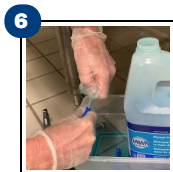
Remove the foot valve. Cut off the supply tube near the foot valve with the tubing cutter and discard. Allow the chemical concentrate in the supply tube to drain back into the product bottle or into the utility bucket.



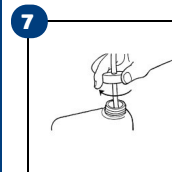
Inspect the white cap and gray tube stiffener. If parts are missing or damaged replace using the parts found in the spare parts kit if needed.



Replace the foot valve to the supply tube end using your hands. **Ensure the foot valve color configuration is the same as the previous.**



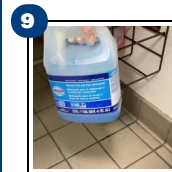
Insert the foot valve, tube stiffener in the product bottle. Twist **ON** the white cap with hole.



Push the gray button to activate the dilution center. Ensure that the product supply tubing is primed and proper product flow is achieved.



Replace the product bottle back into its usual location. Rinse and clean the container.



**NOTE:** Test the Clean Quick Broad Range Quaternary Sanitizer dilution by following the procedure Test Quaternary Sanitizer Solution.

**NOTE:** If the supply tubing needs to be replaced it will not easily slide back onto the foot valve barb.