

# How to Replace Squeeze Tubes [Sprite & Seko Mini]

## Tools Needed

- Eye Protection & Gloves
- Flathead Screwdriver
- Side or Hose Cutter
- Zip Tie(s)

## Frequency

### Special Directions

Gloves and eye protection must be worn if handling concentrated chemicals. (CCT 219)

## Link to Training Video



Scan the QR code or click the link below to see the training video.

<https://bit.ly/3KlwnK>

## Parts Needed

Squeeze tubes will need to be replaced "as needed" or every 6 months.



Seko Mini **Laundry Squeeze Tube(s) - OPL Mini**  
**03539900090071**



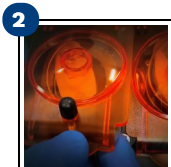
Sprite Pump **Laundry Squeeze Tube(s) - Sprite Pump**  
**035380030NFB6SIL**

## Remove the Pump Cover

These pumps and approved products ([Tide SC](#) or [2X Detergents](#) and [Tide Stain and Odor Eliminator](#)) are used with "home residence style" top load washers.



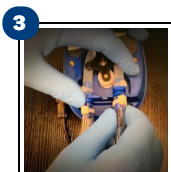
**1** Put on eye protection and gloves.



**2** For the **Sprite** pump, unplug the pump. Loosen the thumb screw on the orange cap and set aside.



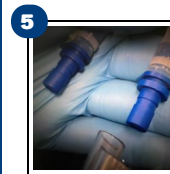
For the **Seko Mini** pump, unplug the pump use a flathead screwdriver to loosen the set screw. Remove the blue cover and set aside.



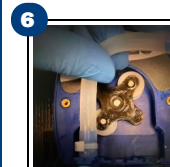
**3** Slide a squeeze tube barb out of the notch and the pump. Note the orientation of the barb and the notch. Repeat for the other side. Dispose the used squeeze tube.



**4** Use the cutter to remove the zip ties from the supply tubing located under the pump at the intake and discharge bars.



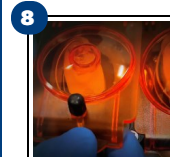
**5** Remove the intake and discharge tubing from the pump bars.



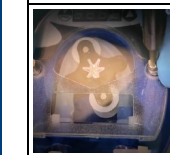
**6** Install the new squeeze tube in the same orientation as before. Ensure the notch and barb are fully seated on each side.



**7** Reattach the supply tubing onto the intake and discharge bars. Secure supply tubes with zip ties.



**8** Replace the cap (Sprite) and cover (Seko Mini) onto the pumps.



# How to Replace Squeeze Tubes [Sprite & Seko Mini]

2 of 2

9



Plug in the controller.

For the **Sprite** pump, press the ENTER button to prime the supply tubing.

For the **Seko Mini** pump, press the red button on the remote to prime the supply tubing. Ensure the squeeze tube functions properly and product is dispensing.