

elevating guest satisfaction

# Hospitality Cleaning Solutions



every experience counts.™

**P&G**  
Professional™

# elevating guest satisfaction

At P&G Professional, we understand your top priority is to provide the best experience possible for your guests. That's *why* we provide cleaning solutions that help your property shine. Our trusted brands help you create a clean, fresh-smelling, home-away-from-home environment.



## P&G PROFESSIONAL SOLUTIONS OFFER:

- Easy-to-use solutions ensure effective use every time
- Brands your staff – and guests – know and trust
- A consolidated product line-up to reduce inventory and labour costs
- Formulas that are designed to be safe for employees
- Single-step cleaning & disinfection
- P&G Professional Service, a team that's fully dedicated to your satisfaction with solutions designed just for you



# superior solutions for every aspect of your hospitality experience

---

## **Housekeeping - pg. 5**

Surface cleaners that clean and disinfect in a single step\*

## **Laundry - pg. 11**

Choose from any of our three Tide Professional laundry systems for clean, white, and soft linens for your guests – and operational savings for you

## **Floor Care - pg. 19**

Get a brilliant shine with less time and effort and remove up to 59% more soil than the leading competitor

## **Foodservice - pg. 23**

Save water and energy while keeping your surfaces sanitized and your property compliant

## **Mechanical Warewash - pg. 29**

Complete your back-of-house capabilities with Cascade Professional products and mechanical warewash

## **Carpet Care - pg. 35**

Simple 3-step system to maintain and restore carpets

## **Sustainability - pg. 37**

Conserve energy, reduce waste, and save time and money with products that deliver outstanding results the first time

## **P&G Professional Service - pg. 39**

Comprehensive service team, dedicated to your satisfaction



simple solutions, exceptionally clean

# Housekeeping



every experience counts.™

**P&G**  
Professional™



# simple solutions, exceptionally clean

With P&G Professional, it's easy to keep every area of your facility clean, fresh-smelling and comfortable - and keep guests coming back.



## THE POWER OF **3-IN-1** CLEANERS

HELPS SAVE YOU TIME AND LABOUR

### Spic and Span® Disinfecting All-Purpose Spray and Glass Cleaner

- Cleans with 50% fewer strokes\* saving you time and labour
- A registered disinfectant\*\* effective against germs† with no pre-cleaning
- For dry surfaces, such as counter tops, windows, and mirrors

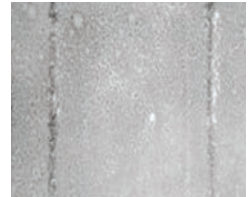


## NON-ABRASIVE FORMULA CLEANS WITH **50%** FEWER STROKES

HELPS SAVE YOU TIME AND LABOUR

### Comet® Disinfecting Bathroom Cleaner

- Clean and Disinfect in one step\*\*
- A registered disinfectant\*\*
- Combines the power of a heavy duty restroom cleaner and surface deodorizer
- For wet surfaces such as toilets, sinks, chrome, tile, tub, and fibreglass



Leading Competition

## REMOVES MORE **GRIME** THAN THE LEADING SPRAY CLEANER

### Mr. Clean® Magic Eraser

- Penetrates surface grooves to clean trapped dirt and grime with water alone
- Works great on walls, doors, molding, base boards, and more



\*vs. other leading brands

\*\*when used per label instructions

†when used per label instructions, effective against Staphylococcus aureus and Avian Influenza and more



exceptionally clean

REMOVE UP TO  
**59% MORE SOIL**  
THAN THE LEADING COMPETITOR

#### Mr. Clean® Professional Finished Floor Cleaner

- Excellent cleaning and shine preservation for a wide range of shiny finished floors including ceramic and vinyl tile, terrazzo, and varnished hardwood
- Versatile all-purpose cleaner for walls, tables, countertops, restrooms, and wide variety of other surfaces
- No butyl, non-corrosive, and closed loop packaging for concentrates



TRAPS & LOCKS  
**70% OF DUST & ALLERGENS**

#### Swiffer® Professional Sweeper Implement & Swiffer® Professional Dry Cloth Refills

- Swiffer Sweeper is certified by the Canadian Allergy, Asthma and Immunology Foundation to trap and lock dust & allergens\*
- Provides the finishing touch for cleanups, attracting and trapping dust, dirt, common allergens, and hair to the cloth
- Leaves floors up to 3X cleaner than a broom\*



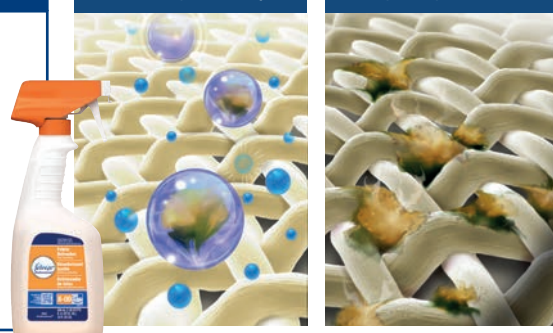
ELIMINATES  
**TOUGH ODOURS**  
SO THEY'RE GONE FOR GOOD

#### Febreze® Professional Fabric Refresher

- Patented formula traps and locks away odour molecules
- Perfect for hard-to-clean fabrics like furniture upholstery, bedding, carpets, and window treatments

Febreze technology surrounds the odour and eliminates them at the source permanently

Other: leading sprays only mask odours by covering them up with perfumes



\*inanimate allergens from cat and dog dander & dust mite matter  
\*\*on dirt, dust, and hair

# product line-up

## Spic and Span® Disinfecting All-Purpose Spray and Glass Cleaner



- Replaces three products with one for less inventory
- Remarkable cleaning performance as a disinfectant, hard surface cleaner and glass cleaner

## Febreze® Professional Fabric Refresher



- Leaves a light, fresh scent
- Safe for virtually all fabrics

## Comet® Disinfecting Bathroom Cleaner



- Combines the power of a heavy duty restroom cleaner and surface deodorizer
- Removes restroom soils and hard water stains
- A Health Canada Registered Disinfectant\*
- Replaces the need for a separate deodorizer

## Febreze® AIR®



- Patented technology sweeps away stifling odours from the air, even the smell of cigarette smoke

## Mr. Clean® Professional Finished Floor Cleaner



- Dissolves and removes tough, ground-in dirt from finished floors without dulling residue

## Swiffer® Professional Sweeper Implement

- Thick, dry sweeping cloth to trap and lock dirt, dust, common allergens\*\*, and hair, even on textured surfaces



## Mr. Clean® Magic Eraser



- Effectively removes scuff marks and stains from doors, walls, countertops and unfinished surfaces

## Swiffer® Professional Dry Cloth Refills



- Traps up to 2X more dust than a dry dust cloth for a high-definition clean
- Traps and locks up to 3X more dust than a feather duster

\*when used per label instructions, effective against Pseudomonas aeruginosa, Staphylococcus aureus, and Salmonella enterica

\*\*inanimate allergens from cat and dog dander & dust mite matter



elevate your guest experience

# Tide Professional Laundry System



every experience counts.™

**P&G**  
Professional™

# protect your laundry investment with Tide Professional

Optimize your fabric care system with Tide®, Downy® and Clorox® so your linens look and feel more like new, longer. These solutions deliver Tide's signature clean to everyday soils, with specially formulated stain aids to remove stubborn stains from grease, rust, coffee, and more.

Here are just a few of the many benefits:

	Tide® Professional Everyday System	Tide® Professional Advanced System	Tide® Professional Coldwater System
Soft, clean, white linens your guests will notice	✓	✓	✓
pH near neutral system	✓	✓	✓
Employee Satisfaction and Safety*	✓	✓	✓
Keep linen fibres stronger for longer lasting linens**	✓	✓	✓
Rejuvenates linens and maintains whiter whites**		✓	✓
Reduces utility costs†			✓
<b>Potential bottom line SAVINGS when you switch†† For a 150 room property</b>	<b>\$1,400</b>	<b>\$2,600</b>	<b>\$6,300</b>

Clorox is a trademark of The Clorox Co., used under license by P&G

\*according to a survey on employee satisfaction of over 400 P&G Professional current on-premise laundry end users, 2013

\*\*vs. leading alkaline system in 50-cycle test with full Tide Professional System – Tide detergent, Clorox, Whiteness Enhancer and Downy

†Through utilization of less water and gas in washing machines when you switch to Tide Professional Coldwater System from the standard hot system. For guest room linens only.

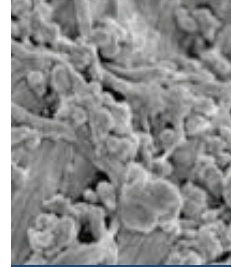
††Annual savings based on switching from a standard alkaline system to the Tide Professional Coldwater System. Assume Canada national average water and gas costs according to Canada West Foundation "Water, Water Use & Water Pricing Around the World" report (figure 8), September 2011 and the National Energy Board of Canada "Short-2014-2016- Energy Market Assessment". Must have fully programmable washing machines to qualify for savings. Linen savings based on a 50-cycle test vs. the leading alkaline system. Savings assumes the standard competitive system is priced parity with Tide Professional Everyday system (Tide Detergent, Clorox and Downy) and uses linen replacement cost data based on a study among Hospitality key decision makers in April 2014.



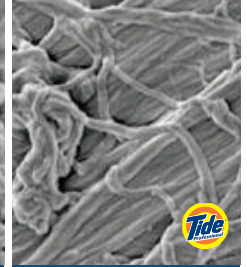
experience guest satisfaction with  
white, bright, soft linens

## NEAR **PH** NEUTRAL FOR SAFETY

- Strong fibres, noticeable softness and more come from a near neutral pH level in our system.
- Safe for employees – non-DOT hazardous.
- Less corrosive vs. competition.



High pH formula:  
Calcium deposits  
on fabric fibres after  
20 washes



Tide Professional Laundry  
System fabric fibres, after  
20 washes, have no  
calcium deposits

## MAKES FABRICS NOTICEABLY **SOFTER** TO THE TOUCH\*

- Tide Professional Laundry Systems cleans at near neutral pH, minimizing calcium deposits, keeping fabrics softer.



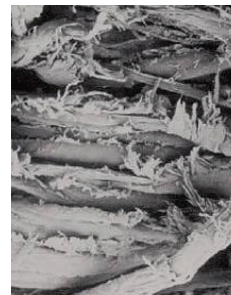
The leading  
competition after  
30 cycles



Tide Professional  
Laundry System after  
30 cycles

## KEEPS FIBRES **STRONGER** FOR LONGER\*\*

- Tide Professional helps prevent chemical fibre damage, keeping linens 67% stronger than the leading alkaline system.



Leading Alkaline  
System Fibre Damage



Tide Professional Laundry  
System Fibre Care

\*vs. leading alkaline system in 30-cycle test with full Tide Professional System – Tide detergent, Clorox, Whiteness Enhancer and Downy  
\*\*vs. leading alkaline system in 50-cycle test with full Tide Professional System – Tide detergent, Clorox, Whiteness Enhancer and Downy

# Tide Professional everyday system

## SOFT, CLEAN WHITE LINENS

Give your guests Tide Professional's signature clean. The near-neutral pH formula helps protect fabric strength for longer-lasting linens\*.



### 1 Clean. Choose between Tide 2X or Tide SC for signature clean.



#### Tide® Professional SC – for medium to hard water

- Formulated to help overcome unique wash room and water conditions



#### Tide® Professional 2x – for soft water

- Proprietary enzymatic technology delivers Tide's signature clean



The only professional laundry system clinically tested to be gentle on skin

### 2 Brighten.



#### Clorox®

- Safely eliminates residual color from stains

### 3 Soften.



#### Downy® Professional

- Provides noticeable softness without dyes or perfumes

### Additional: Stain Aids



Clorox is a trademark of The Clorox Co., used under license by P&G

\*vs. leading alkaline system in 50-cycle test with full Tide Professional System – Tide detergent, Clorox, Whiteness Enhancer and Downy

\*\*The Seal of Cotton is a Registered Service Mark / Trademark of Cotton Incorporated

# Tide Professional advanced system

**32% SAVINGS**  
IN REPLACEMENT COSTS\*

Add Tide Whiteness Enhancer to Tide Professional's signature clean for 33% whiter whites for even for 88% longer whitening.



## 1 Clean. Choose between Tide 2X or Tide SC for signature clean.

**Tide® Professional SC – for medium to hard water**

- Formulated to help overcome unique wash room and water conditions



**Tide® Professional 2x – for soft water**

- Proprietary enzymatic technology delivers Tide's signature clean



**BEFORE**  
6-9 month old hotel towel



**AFTER**  
1.5x whiter in one wash with Tide Professional Laundry System

## 2 Brighten.

**Clorox®**

- Safely eliminates residual color from stains



## 3 Whiten.

**Tide® Professional Whiteness Enhancer**

- Non-bleach rinse aid that helps neutralize the dinginess that happens over time on fabrics



## 4 Soften.

**Downy® Professional**

- Provides noticeable softness without dyes or perfumes



## Additional: Stain Aids



Clorox is a trademark of The Clorox Co., used under license by P&G

\*Than leading alkaline system in 50 cycle test then 5 cycles in Tide Professional Laundry System with Whiteness Enhancer

\*\*The Seal of Cotton is a Registered Service Mark / Trademark of Cotton Incorporated



# Tide Professional coldwater system

**REDUCE**  
ENERGY  
BY UP TO **75%\***

And reduce water use by up to 40%\*\* , while providing Tide Professional's signature clean.



## 1 Clean.

### Tide® Professional Coldwater

- Advanced formula uses more enzymes designed for lower wash temperatures to help break down stains in colder water††



A whole new system of clean designed to use less water with colder temperatures. ††

## 2 Brighten.

### Clorox®

- Safely eliminates residual color from stains



## 3 Whiten.

### Tide® Professional Whiteness Enhancer

- Non-bleach rinse aid that helps neutralize the dinginess that happens over time on fabrics



## 4 Soften.

### Downy® Professional

- Provides noticeable softness without dyes or perfumes



## Additional: Stain Aids



Clorox is a trademark of The Clorox Co., used under license by P&G

\*When you switch to the Tide Professional Coldwater System from the standard hot system. For guest room linens only. Applies to energy used to heat water in your washing machine only.

\*\*When you switch to the Tide Professional Coldwater System from the standard hot system. For guest room linens only. Applies to water used in your washing machine only.

†The Seal of Cotton is a Registered Service Mark / Trademark of Cotton Incorporated

††As low as 32°C. Compared to regular Tide Professional.

# additional products based on your specific needs

## Tide® Professional Stain Removal Treatment

- Efficient rewash power to help maximize linen reclamation



## Tide® Professional Multi-Purpose Stain Remover

- Effectively remove a wide variety of stains



## Tide® Professional Rust Remover

- Treats Stubborn stains like rust, tea and coffee



## Tide® Professional Color Safe Bleach

- Cleans tough soils while keeping fabric colors vibrant
- Its oxygen-bleach technology is designed to remove stains at a near-neutral pH, helping fabrics last longer



## Tide® Professional Greasy Stain Fighter

- Designed as a linen treatment to help prevent grease stains from locking in to foodservice linens
- Neutral pH and phosphate-free formula leaves linens clean and free from encrustation



longer lasting, brilliant floors

# Floor Care



every experience counts.™

**P&G**  
Professional™



# a simple system for a brilliant shine

## 1 Highly Effective Stripper

## 2 Long-Lasting Finish

## 3 Superior Floor Cleaner



**A floor care system  
for unbeatable floors**

**EXTREMELY  
LOW ODOUR  
WITH NO BUTYL**

### P&G Pro Line® #10 Floor Finish Stripper

- Great for education and 24/7 facilities
- Proprietary combination of solvents makes it as effective as traditionally high pH strippers
- Lower alkalinity—safer for employees



**87% OF BUSINESS  
OWNERS  
PURCHASE P&G PRO LINE  
FLOOR FINISHES**  
AFTER COMPARING TO THEIR CURRENT FINISH

### P&G Pro Line® Floor Finishes

- A floor finish for every maintenance schedule
- Exceptional durability and shine in the third and fourth coat
- All finishes can be burnished with propane or electric machines



**REMOVE UP TO  
59% MORE  
SOIL**  
THAN THE LEADING COMPETITOR  
AND EXTEND FLOOR FINISH LIFE

### P&G Pro Line® #32 Finished Floor Cleaner

- Unique blend of surfactants allows mops/auto scrubbers to lift deposited soils better than the competition
- High dilution rate for damp mop cleaning or all-purpose cleaning (1:256) and auto scrubber use (1:512)
- Makes 4x as many mop buckets as the leading competitor



#### LEADING COMPETITOR



10 swipes total



10 swipes total

## product line-up

Our P&G Pro Line® Floor Care System features a complete lineup of high performance finished floor care products.

### 1 Highly Effective Strippers

#### P&G Pro Line® #10 Floor Finish Stripper



- Highly effective on tough strip jobs, “no rinse” formula leaves floor free of alkalinity, butyl free and low odour.
- Cost effective 1:8 dilution.

### 2 Floor Finishes That Last

#### Presence™ #13 Low Maintenance Floor Finish



- Superior durability and shine.
- Designed to be burnished 0-2 times per month.

#### Grand Opening™ #17 Premium Ultra High Speed Floor Finish



- Unbeatable wet-look gloss with exceptional burnish response.
- Designed for daily burnishin, 5-7 times per week.

#### High Affinity™ #16 Low Maintenance Floor Finish



- Designed to deliver high depth of gloss, shine and superior durability.
- Designed to be burnished 0-1 times per week.

### 3 Superior Floor Cleaners

#### P&G Pro Line® #32 Finished Floor Cleaner



- Dissolves and removes tough dirt, low sudsing formula – ideal for auto scrubbers, high dilution rate 1:212, 1:512 in auto scrubber.

#### Mr. Clean® Professional Disinfecting Floor and Surface Cleaner



- A no-rinse neutral pH disinfectant cleaner that disinfects, cleans, sanitizes and deodorizes in one labour-saving step when used as directed. Provides effective cleaning strength that will not dull most metal-interlock floor finishes.

streamlined cleaning solutions. simpler for your employees

# Foodservice



every experience counts.™

**P&G**  
Professional™



# easy for your staff. enjoyable for your guests.

Our program features:

- Industry-compliant disinfection and sanitization solutions
- Simplified training and recognizable brands your employees know and trust to enable compliance
- Improved productivity with professional strength, multi-purpose products
- Foodservice formulations designed with safety in mind



**CLEANS  
58% MORE  
DISHES\*\***

## Dawn® Professional Pot and Pan Detergent

- Grease-fighting power of Dawn, specifically formulated for tough kitchen jobs
- Dawn saves you up to 6000 gallons of hot water\*
- Reduces sink changeovers by up to 35%\*\*



CLEANS GREASY KITCHEN DIRT IN  
**50% FEWER  
STROKES**  
SAVING YOU TIME AND LABOUR  
VS. OTHER LEADING BRANDS

## Comet® Cleaner with Bleach

- Clean and disinfect in one step†
- Non-abrasive formula effective against tough kitchen and bathroom soils
- Bleaches food stains on countertops, tables, and cutting boards
- A registered disinfectant† capable of cleaning Clostridium difficile spores



**REMOVES  
GREASY SOILS  
UP TO 2X BETTER††**  
VS. THE LEADING COMMERCIAL FLOOR CLEANERS

## Spic and Span® Floor Cleaner

- Versatile and high-performance for easy, fast cleaning of foodservice grease found on floors and other areas
- Effective on quarry tiles, un-waxed floors, coolers, walls, fryers, doors, exhaust vents, filters, screens, exhaust hoods, outside areas, parking spots and drop off areas



\*Tested vs. a leading competitor. Based on typical product performance, typical sink sizes and washes using 4 sinks a day.

\*\*vs. leading competitor based on recommended dosage of 1oz. per 10 gallon sink

†when used per label instructions

††at 8 strokes

exceptionally clean

FOAM SPRAY PENETRATES THE  
**TOUGHEST GREASY FOOD SOILS**  
FOR LIKE-NEW CLEAN ON POTS AND PANS

#### Dawn® Professional Power Dissolver

- Just spray on Dawn Power Dissolver and let the powerful foam work for 10-15 minutes (up to 30 minutes for especially tough grease)
- As you rinse, the grease or burnt-on food mess slides off, leaving you with a like-new clean on pots and pans



BEFORE



AFTER



CUTS THROUGH GREASE WITH  
**70% FEWER STROKES**  
VS. LEADING COMPETITOR

#### Dawn® Professional Heavy Duty Degreaser

- Full-strength cleaning for the toughest greasy soils
- Great for extra-tough, greasy buildups on surfaces like range hoods, ovens, walls behind equipment, floors, drive-thrus, and fuel islands



**NO-RINSE SANITIZING<sup>†</sup>**  
FOR EFFICIENCY AND COMPLIANCE

#### Clean Quick® Broad Range Quaternary

- Non-rinse sanitizer for all food contact surfaces and for third-sink sanitizing





# product line-up

## Dawn® Professional Manual Pot and Pan Detergent



- Fights grease, leaving squeaky clean pots, pans and dishes.

## Clean Quick® Broad Range Quarternary



- No-rinse sanitizer for third-sink sanitizing of dishes, and sanitizing hard (non-porous) surfaces.

## Spic and Span® All-Purpose Spray and Glass Cleaner



- 3-in-1 spray cleaning formula replaces 3 dedicated products.

## Comet® Cleaner with Bleach



- Cuts through and removes tough, greasy dirt and grime.

## Dawn® Professional Heavy Duty Degreaser



- Cuts through grease with 70% fewer strokes\*.

## Dawn® Professional Power Dissolver



- Ideal for use on baked and burned-on grease.
- Effective for pots, pans, dishes, stoves, ovens, and grills.

## Spic and Span® Floor Cleaner



- Cuts through grease on quarry tile.
- Versatile multi-purpose cleaner for floors, walls, tables, food-contact surfaces, and restrooms.

## Safeguard® Lotion Hand Soap



- Great smell – no unpleasant chemical odours.
- Effective against a wide range of bacteria.
- Enriched with moisturizers.



automatic warewash products

# Mechanical Warewash



every experience counts.™

**P&G**  
Professional™



get exceptional shine every time,  
without the extra work

---



New Cascade Professional™ is specially formulated to deliver **exceptional shine every time, without the extra work** of rewashing, bleaching, polishing or deliming.



## advanced ProShine™ technology

---

Cascade Professional™ with ProShine technology contains limescale-fighting agents that help prevent the attachment of calcium to the surfaces of your wares and machine. Instead of calcium turning into filming and cloudiness, it gets washed away.





# deliver like-new results straight from your machine

After three months (700 washes)\*, glass and flatware still shine with:

- No polishing on glassware
- No polishing on silverware

After 1,300 washes with no deliming, the difference in limescale build-up is significant.



## With Cascade Professional™ you:

### Save money –

- \$1,700 in average annual savings\*\* from rewashing and deliming (\$800 in hard savings & \$900 in labour savings)
- Additional labour savings from polishing

**Optimize your operation –** Keep your machine clean and efficient while doubling the time between deliming



\*in medium water hardness  
\*\*based on 300 racks/day

# mechanical warewash product line-up

## PRESOAK



### **Cascade Professional Silverware Presoak 3.78 L**

- Designed for presoaking and de-tarnishing flatware
- Contains ingredients to aid in the reduction of water spotting on flatware and loosening of tough cooked-on soils
- Performs in hard and soft water

## DETERGENTS

### **Cascade Professional Detergents**

- Heavy-duty, all-temperature machine detergent
- Superior formula ensures instant mixing, automatic dispensing ease, and consistent results
- Can be used with any machine



### **Cascade Professional All-Temp Detergent 3.78 L & 18.9 L**

- Can be used in any water condition
- Formula contains superior limescale fighting molecules for medium and hard water environments

## RINSE AIDS

### **Cascade Professional Rinse Aids**

- Work in all-temperature dish machine applications
- Counteracts spotting caused by water impurities and dissolved solids.
- Compatible with quat, chlorine and iodine based sanitizers



### **Cascade Professional All-Temp Rinse Aid 3.78 L & 18.9 L**

- Special conditioning agents provide rapid draining and rinsing



### **Cascade Professional All-Temp Fast Dry Rinse Aid 3.78 L & 18.9L**

- 15% faster drying time vs. All-Temp Rinse Aid
- Ideal for operations where dry time is of high importance (high end covers & plastic items)

## SANITIZER



### **Luster Professional Presoaks 3.18 kg**

- Designed for all food contact surfaces
- Registered for mechanical and manual warewash

## ANCILLARY PRODUCTS



### **Luster Professional Metal Safe Detergent 3.78 L & 18.9 L**

- Specifically designed to protect metal wares from corrosion
- Safe for use on soft metals including aluminum



### **Luster Professional Bar Glass Detergent 3.78 L**

- Low-sudsing manual detergent
- Designed for glass washing

## SPECIALTY



### **Luster Professional Presoaks 3.18 kg**

- Designed for presoaking wares in powder form (no dilution equipment)
- De-tarnish and de-stain
- vEnzyme based Silverware Presoak
- Oxy Presoak and Destainer



### **Luster Professional Delimer ZP 3.78 L**

- Phosphate-free limescale remover
- Removes mineral deposits on dish machines and kitchen equipment



### **Luster Professional Conveyor Lube 18.9 L**

- Soap-based lubricant for conveyor systems

# dilution control product packaging benefits

## our dilution control:

- Reduces employee contact with concentrated cleaners, improving safety and lowering risk of accidental splash
- Reduces glugging, which lowers in-use cost
- Easy-to-use system allows only the right colour and size cap to work with the matching product





# tackle specific cleaning needs with our specialty products

## Mr. Clean® Magic Eraser



- Highly effective cleaning tool for walls, floors and other non-finished surfaces
- Each swipe removes more grime than leading all-purpose spray cleaner
- No harsh chemicals

## DCT® Bio Drain XL Cleaner & Deoderizer



- Natural enzymatic cleaner engineered to break down all types of organic soils and grease buildup from drain lines
- Removes the source of odours

## Baseline® Stainless Steel Cleaner & Polish



- Specially formulated to clean, polish and protect stainless steel and a wide variety of other surfaces in one step, without hard rubbing

## Additional Products for Your Cleaning Include:



DCT  
Delimer



Cascade®  
Fryer Boilout

a complete carpet care system with amazing results

# Carpet Care



every experience counts.™

**P&G**  
Professional™

# easy cleaning, beautiful carpets, one system

Simplify carpet cleaning with P&G Pro Line® Carpet Care System. Maintain, restore and protect carpets with a complete high performance system that works together to help carpets look their best.

## 2 easy steps to fresh, clean carpets

### 1 Daily/regular maintenance spotters.

Avoid staining with these clear formula products. Fresh, clean fragrance.



#### #20 General Use

- Engineered to penetrate petroleum-based soils and break down protein and food stains
- Formulated with non-ionic surfactant systems to penetrate soils without damaging

Size	Units per Case
739 mL	15



#### #21 Bio Spot

- Designed to eliminate urine, milk, blood, and other odour-causing organic material
- Formulated with three enzyme-producing bacteria strains

Size	Units per Case
739 mL	15



#### #21 Tannin Spot

- Developed to attack coffee stains, tannin-based (alkaline) stains, rust, and oxidized organics
- Acid-fortified formula

Size	Units per Case
739 mL	15

### 2 Interim maintenance.

Remove common soils that darken carpets.



#### #25 Carpet Extraction Cleaner

- Formulated to clean and deodorize in one step

Size	Units per Case
3.78 L	4



sustainable cleaning that works

# Sustainability

every experience counts.™

**P&G**  
Professional™

# the next generation of sustainable cleaning

At P&G, sustainability is a responsibility and an opportunity to make improvements that matter, and to make life better for the greatest number of lives. As a company, we have committed to bold, long-term goals, publicly declaring to move toward:

- Powering our plants with 100% renewable energy
- Using 100% renewable or recycled materials for all products and packaging
- Having zero consumer & manufacturing waste go to landfills

For more on P&G's overall approach to sustainability, please visit [pgpro.ca/solutions/sustainability](http://pgpro.ca/solutions/sustainability)

## Sustainability and P&G Professional

We believe that green begins with clean. Our scientists formulate products that deliver outstanding results the first time to help you:

- Conserve energy, water and packaging
- Reduce waste
- Save time and money

We help businesses thrive by providing products of superior quality and value, now and for generations to come.

### P&g professional green guarantee



Our internal certification program ensures that P&G products provide outstanding performance while meeting high standards for environmental and human safety.

- All Green Guarantee products meet required external standards, including the US EPA national or international standards
- Green Guarantee products meet P&G's high internal standards to ensure we deliver safe, effective products for billions of people

### Leed for existing buildings certification



P&G Professional products have contributed to many customers achieving LEED for Existing Buildings certification.

- From restaurants and schools to hotels and office buildings, P&G Professional products can help customers qualify for LEED: EB certification
- Our line of disinfectants and floor cleaners meet California VOC requirements, a criterion for green cleaning products under LEED Existing Building standards



For more on P&G Professional's approach to sustainability, please visit [pgpro.ca/solutions/sustainability](http://pgpro.ca/solutions/sustainability)



dedicated to your satisfaction

# P&G Professional Service



every experience counts.™

**P&G**  
Professional™



# dedicated to your satisfaction

P&G Professional is known for our trusted brands and safe, simple solutions that improve the operational efficiency of your business. To ensure that we continuously deliver the highest quality, we offer P&G Professional Service – a team that’s fully dedicated to your satisfaction, with streamlined solutions designed just for you.



## innovative equipment solutions

- Accurate dosing for less waste and more savings
- Tytro Pro system with Accupro technology averages 98-99% accuracy\* at Low and High Flows across the range of metering tips
- Expert installation without interrupting your business
- Guaranteed equipment performance

A range of Tytro Pro™ models allows for customized solutions to fit your business.



\*validated with water pressure ranging from 30-60 psi

# dedicated to your satisfaction



## motivated by your satisfaction, not commissioned sales

- Sales and Service reps serve different roles, so we're not selling you products or equipment you don't need
- We're measured on customer satisfaction, responsiveness, quality and compliance – NOT commissioned sales



## service essentials

- Expert installation of performance-guaranteed equipment
- 24/7 emergency support when you need it
- Data capture lets you know what service has been performed, with date and time of visit



## regulatory support

Our dedicated team works across local, state and federal levels to ensure compliance with:

- Plumbing, food safety, and worker safety regulatory authorities, such as CCOHS
- Health Canada and other provincial and federal public health agencies



## training

- Ongoing employee training, at every visit, post installation
- Job aids and wall charts to improve procedural understanding
- On-demand virtual training through P&G Professional University




## procedures

- Easy-to-follow cleaning and safety procedures reinforce employee training
- Multi-lingual procedures provide clear understanding
- Digital procedures available through our online portal

# full product line-up

Janitorial	 <b>Comet® Disinfecting Bathroom Cleaner</b> <ul style="list-style-type: none"> <li>Size: 3.78 L</li> <li>Units per Case: 3</li> </ul>	 <b>Comet® Disinfecting Bathroom Cleaner</b> <ul style="list-style-type: none"> <li>Size: 945 mL</li> <li>Units per Case: 8</li> </ul>	 <b>Spic and Span® Disinfecting All-Purpose Spray and Glass Cleaner Concentrate</b> <ul style="list-style-type: none"> <li>Size: 3.78 L</li> <li>Units per Case: 3</li> </ul>	 <b>Spic and Span® Disinfecting All-Purpose Spray and Glass Cleaner</b> <ul style="list-style-type: none"> <li>Size: 945 mL</li> <li>Units per Case: 8</li> </ul>
	 <b>Febreze® Professional Fabric Refresher</b> <ul style="list-style-type: none"> <li>Size: 3.78 L</li> <li>Units per Case: 2</li> </ul>	 <b>Febreze® Professional Fabric Refresher</b> <ul style="list-style-type: none"> <li>Size: 945 mL</li> <li>Units per Case: 8</li> </ul>	 <b>Febreze AIR®</b> <ul style="list-style-type: none"> <li>Size: 250 g</li> <li>Units per Case: 9</li> </ul>	 <b>Swiffer® Professional Sweeper</b> <ul style="list-style-type: none"> <li>Size: 1 implement</li> <li>Units per Case: 3</li> </ul>
	 <b>Swiffer® Professional Dry Cloth Refills</b> <ul style="list-style-type: none"> <li>Count: 32 ct</li> <li>Units per Case: 6</li> </ul>	 <b>Mr. Clean® Magic Eraser®</b> <ul style="list-style-type: none"> <li>Count: 4 ct</li> <li>Units per Case: 6</li> </ul>	 <b>Mr. Clean® Professional Finished Floor Cleaner</b> <ul style="list-style-type: none"> <li>Size: 3.78 L</li> <li>Units per Case: 3</li> </ul>	

Laundry	 <b>Tide® Professional Rust Remover</b> <ul style="list-style-type: none"> <li>Size: 945 mL</li> <li>Units per Case: 9</li> </ul>	 <b>Tide® Professional Multi-Purpose Stain Remover</b> <ul style="list-style-type: none"> <li>Size: 945 mL</li> <li>Units per Case: 9</li> </ul>	 <b>Tide® Professional Stain Remover Treatment</b> <ul style="list-style-type: none"> <li>Size: 204 g</li> <li>Units per Case: 14</li> </ul>	 <b>Tide® Professional Greasy Stain Fighter</b> <ul style="list-style-type: none"> <li>Size: 9.46 L</li> <li>Units per Case: 1</li> </ul>
	 <b>Tide® Professional 2x</b> <ul style="list-style-type: none"> <li>Sizes: 18.9 L and 56.78 L</li> <li>Units per Case: 1</li> </ul>	 <b>Tide® Professional SC</b> <ul style="list-style-type: none"> <li>Sizes: 18.9 L and 56.78 L</li> <li>Units per Case: 1</li> </ul>	 <b>Tide® Professional Coldwater</b> <ul style="list-style-type: none"> <li>Sizes: 18.9 L and 56.78 L</li> <li>Units per Case: 1</li> </ul>	 <b>Tide® Professional Color Safe Bleach</b> <ul style="list-style-type: none"> <li>9.46 L and 18.9 L</li> <li>Units per Case: 1</li> </ul>
	 <b>Tide® Professional Whiteness Enhancer</b> <ul style="list-style-type: none"> <li>Size: 18.9 L</li> <li>Units per Case: 1</li> </ul>	 <b>Clorox® Bleach</b> <ul style="list-style-type: none"> <li>Sizes: 18.9 L and 56.78 L</li> <li>Units per Case: 1</li> </ul>	 <b>Downy® Professional Unscented Fabric Softener</b> <ul style="list-style-type: none"> <li>Size: 18.9 L</li> <li>Units per Case: 1</li> </ul>	



# full product line-up

Floor care	 <b>P&amp;G Pro Line® #18 Baseboard Stripper</b> <ul style="list-style-type: none"> <li>Size: 945 mL</li> <li>Units per Case: 8</li> </ul>	 <b>P&amp;G Pro Line® #10 Low Odor Floor Stripper</b> <ul style="list-style-type: none"> <li>Size: 18.9 L</li> <li>Units per Case: 1</li> </ul>	 <b>Presence™ #13 High Performance Low Maintenance Floor Finish</b> <ul style="list-style-type: none"> <li>Size: 18.9 L</li> <li>Units per Case: 1</li> </ul>	 <b>Grand Opening™ #17 Premium Ultra High Speed Floor Finish</b> <ul style="list-style-type: none"> <li>Size: 18.9 L</li> <li>Units per Case: 1</li> </ul>
	 <b>P&amp;G Pro Line® #32 Finished Floor Cleaner</b> <ul style="list-style-type: none"> <li>Size: 3.78 L</li> <li>Units per Case: 4</li> </ul>			
Carpet care	 <b>P&amp;G Pro Line® #20 General Use</b> <ul style="list-style-type: none"> <li>Size: 739 mL</li> <li>Units per Case: 15</li> </ul>	 <b>P&amp;G Pro Line® #21 Bio Spot</b> <ul style="list-style-type: none"> <li>Size: 739 mL</li> <li>Units per Case: 15</li> </ul>	 <b>P&amp;G Pro Line® #22 Tannin Spot</b> <ul style="list-style-type: none"> <li>Size: 739 mL</li> <li>Units per Case: 15</li> </ul>	 <b>P&amp;G Pro Line® #25 Carpet Extraction Cleaner</b> <ul style="list-style-type: none"> <li>Size: 3.78 L</li> <li>Units per Case: 4</li> </ul>
Foodservice	 <b>Dawn® Professional Manual Pot and Pan Detergent</b> <ul style="list-style-type: none"> <li>Size: 3.78 L</li> <li>Units per Case: 4</li> </ul>	 <b>Dawn® Professional Heavy Duty Degreaser</b> <ul style="list-style-type: none"> <li>Size: 3.78 L</li> <li>Units per Case: 3</li> </ul>	 <b>Dawn® Professional Power Dissolver</b> <ul style="list-style-type: none"> <li>Size: 945 mL</li> <li>Units per Case: 6</li> </ul>	 <b>Clean Quick® Broad Range Quaternary</b> <ul style="list-style-type: none"> <li>Size: 3.78 L</li> <li>Units per Case: 3</li> </ul>
	 <b>Comet® Cleaner with Bleach</b> <ul style="list-style-type: none"> <li>Size: 3.78 L</li> <li>Units per Case: 3</li> </ul>	 <b>Comet® Cleaner with Bleach</b> <ul style="list-style-type: none"> <li>Size: 945 mL</li> <li>Units per Case: 8</li> </ul>	 <b>Spic and Span® Disinfecting All-Purpose Spray and Glass Cleaner</b> <ul style="list-style-type: none"> <li>Size: 3.78 L</li> <li>Units per Case: 3</li> </ul>	 <b>Spic and Span® Disinfecting All-Purpose Spray and Glass Cleaner</b> <ul style="list-style-type: none"> <li>Size: 945 mL</li> <li>Units per Case: 8</li> </ul>
	 <b>Spic and Span® Floor Cleaner</b> <ul style="list-style-type: none"> <li>Size: 3.78 L</li> <li>Units per Case: 3</li> </ul>	 <b>Cascade® Professional Fryer Boilout</b> <ul style="list-style-type: none"> <li>Size: 2.4 kg</li> <li>Units per Case: 6</li> </ul>		

# full product line-up

Mechanical warewash	 <b>Cascade® Professional All-Temp Detergent</b> <ul style="list-style-type: none"> <li>• Size: 3.78 L</li> <li>• Units per case: 2</li> </ul>	 <b>Cascade® Professional All-Temp Detergent</b> <ul style="list-style-type: none"> <li>• Size: 18.9 L</li> <li>• Units per case: 1</li> </ul>	 <b>Cascade® Professional All-Temp Rinse Aid</b> <ul style="list-style-type: none"> <li>• Size: 3.78 L</li> <li>• Units per case: 2</li> </ul>	 <b>Cascade® Professional All-Temp Rinse Aid</b> <ul style="list-style-type: none"> <li>• Size: 18.9 L</li> <li>• Units per case: 1</li> </ul>
	 <b>Cascade® Professional All-Temp Fast Dry Rinse Aid</b> <ul style="list-style-type: none"> <li>• Size: 3.78 L</li> <li>• Units per case: 2</li> </ul>	 <b>Cascade® Professional All-Temp Fast Dry Rinse Aid</b> <ul style="list-style-type: none"> <li>• Size: 18.9 L</li> <li>• Units per case: 1</li> </ul>	 <b>Cascade® Professional Silverware Presoak</b> <ul style="list-style-type: none"> <li>• Size: 3.78 L</li> <li>• Units per case: 2</li> </ul>	 <b>Luster® Professional All-Temp Detergent</b> <ul style="list-style-type: none"> <li>• Size: 3.78 L</li> <li>• Units per case: 4</li> </ul>
	 <b>Luster® Professional All-Temp Detergent</b> <ul style="list-style-type: none"> <li>• Size: 18.9 L</li> <li>• Units per case: 1</li> </ul>	 <b>Luster® Professional Low-Temp Detergent</b> <ul style="list-style-type: none"> <li>• Size: 3.78 L</li> <li>• Units per case: 4</li> </ul>	 <b>Luster® Professional Low-Temp Detergent</b> <ul style="list-style-type: none"> <li>• Size: 18.9 L</li> <li>• Units per case: 1</li> </ul>	 <b>Luster® Professional Ultra All-Temp Detergent Plus</b> <ul style="list-style-type: none"> <li>• Size: 3.78 L</li> <li>• Units per case: 2</li> </ul>
	 <b>Luster® Professional Ultra Metal-Safe All-Temp Detergent</b> <ul style="list-style-type: none"> <li>• Size: 3.78 L</li> <li>• Units per case: 2</li> </ul>	 <b>Luster® Professional Ultra Metal-Safe All-Temp Detergent</b> <ul style="list-style-type: none"> <li>• Size: 18.9 L</li> <li>• Units per case: 1</li> </ul>	 <b>Luster® Professional Ultra All-Temp Rinse Additive</b> <ul style="list-style-type: none"> <li>• Size: 3.78 L</li> <li>• Units per case: 2</li> </ul>	 <b>Luster® Professional All-Temp Rinse Additive</b> <ul style="list-style-type: none"> <li>• Size: 3.78 L</li> <li>• Units per case: 4</li> </ul>
	 <b>Luster® Professional All-Temp Rinse Additive</b> <ul style="list-style-type: none"> <li>• Size: 18.9 L</li> <li>• Units per case: 1</li> </ul>	 <b>Luster® Professional Low-Temp Rinse Additive</b> <ul style="list-style-type: none"> <li>• Size: 18.9 L</li> <li>• Units per case: 1</li> </ul>	 <b>Luster® Professional Hard Water Rinse Additive</b> <ul style="list-style-type: none"> <li>• Size: 3.78 L</li> <li>• Units per case: 4</li> </ul>	 <b>Luster® Professional Hard Water Rinse Additive</b> <ul style="list-style-type: none"> <li>• Size: 18.9 L</li> <li>• Units per case: 1</li> </ul>
	 <b>Luster® Professional Bar Glass Detergent</b> <ul style="list-style-type: none"> <li>• Size: 3.78 L</li> <li>• Units per case: 4</li> </ul>	 <b>Luster® Professional Chlorine Sanitizer</b> <ul style="list-style-type: none"> <li>• Size: 3.78 L</li> <li>• Units per case: 2</li> </ul>	 <b>Luster® Professional Chlorine Sanitizer</b> <ul style="list-style-type: none"> <li>• Size: 18.9 L</li> <li>• Units per case: 1</li> </ul>	 <b>Luster® Professional Delimer</b> <ul style="list-style-type: none"> <li>• Size: 3.78 L</li> <li>• Units per case: 4</li> </ul>
	 <b>Luster® Professional Conveyor Lube</b> <ul style="list-style-type: none"> <li>• Size: 18.9 L</li> <li>• Units per case: 1</li> </ul>	 <b>Luster® Professional Ultra Silverware Presoak</b> <ul style="list-style-type: none"> <li>• Size: 3.78 L</li> <li>• Units per case: 2</li> </ul>	 <b>Luster® Professional Silverware Presoak</b> <ul style="list-style-type: none"> <li>• Size: 7 lbs</li> <li>• Units per case: 2</li> </ul>	 <b>Luster® Professional Oxy Presoak &amp; Destainer</b> <ul style="list-style-type: none"> <li>• Size: 8 lbs</li> <li>• Units per case: 2</li> </ul>

# P&G

## Professional™

every experience counts.™



To learn more, please call  
**1-800-332-7787.**

Visit [pgpro.ca](http://pgpro.ca) or  
contact your P&G Professional  
representative today.



©2019 P&G

Clorox is a trademark of The Clorox Co., used under license by P&G • Comet and Spic and Span are trademarks of The Prestige Co., used under license by P&G